



Stafford Road, London, E3

BUTLER & STAG



Price Guide £450,000 - £475,000
Welcome to this immaculate top-floor, two-bedroom apartment located in the popular Partridge House in Bow. Finished to an exceptional standard, this property boasts a harmonious blend of modern elegance and comfort in equal measure.



Leasehold

- Top Floor Apartment (Second Floor)
- 775 Sq/Ft Internal Living Space
- Modern Kitchen Diner
- Lavishly Sized Contemporary Bathroom
- Balcony
- Two Well Proportioned Double Sized Bedrooms
- Bamboo Flooring
- Historical Roman Road Market A Moments Walk Away

As you enter, you are greeted by a spacious and bright reception room, adorned with a large window that floods the space with natural light.

Adjacent to the living area is a contemporary kitchen diner, fully equipped with high-quality appliances, sleek cabinetry, and ample counter space, perfect for cooking and entertaining.

The two generously sized bedrooms are thoughtfully designed, featuring large windows, bamboo flooring and built-in wardrobes, providing ample storage without compromising on style.

Additional highlights include ample storage throughout and secure entry. Residents of Partridge House are within close proximity to local amenities, parks, and excellent transport links, making commuting a breeze.

This top-floor gem offers a rare opportunity to experience stylish, city living with all the comforts of a modern home.

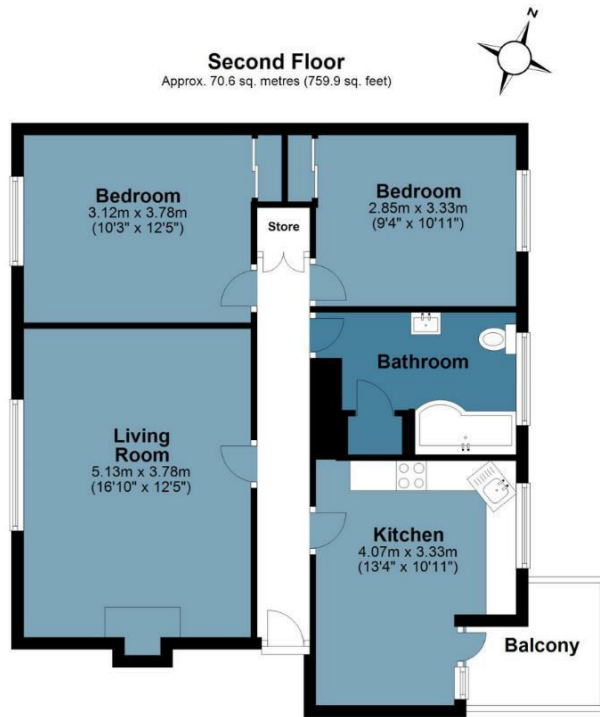




Partridge House



Approx. Gross Internal Area 72 sq. metres (775.0 sq. feet)



Measurements are approximate and for illustration purposes only. While we do not doubt the accuracy and completeness, we advise you conduct a careful independent assessment of the property to determine monetary value
© @modephoto.uk www.modephoto.co.uk



☎ 020 8102 1236

🏠 508 Roman Road, Bow, London, E3 5LU

✉ bow@butlerandstag.com

www.butlerandstag.uk

IMPORTANT NOTICE - These particulars have been prepared in good faith and they are not intended to constitute part of an offer or contract. We have not performed a structural survey on this property and the services, appliances and specific fittings have not been tested. All photographs, measurements, floor plans and distances referred to are given as a guide and should not be relied upon.